

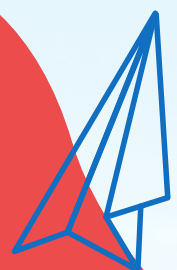
ASPIRE OSHC



# VACATION CARE PROGRAM ST FRANCIS OF ASSISI

SEPTEMBER / OCTOBER 2025

**BOOK NOW**





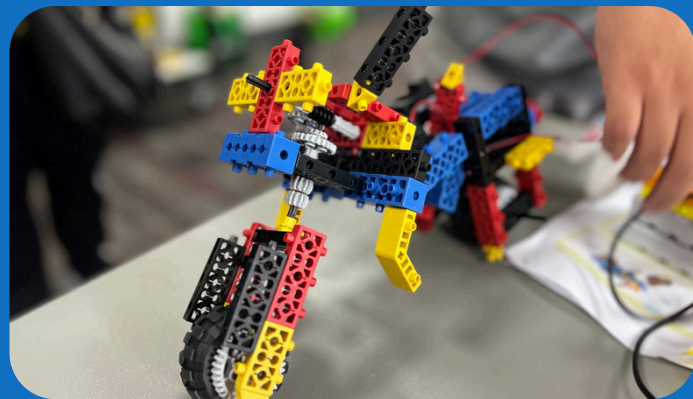
# VACATION CARE PROGRAM

## ST FRANCIS OF ASSISI

**SERVICE MANAGER:** Tabitha  
**PHONE:** 0473 172 964  
**EMAIL:** st.francis@aspire-oshc.com.au

**Monday**  
29/09/2025

### Robotics Internal Excursion



Get ready to design, build, and battle robots in an action-packed hands-on workshop with RoboThink!

- Location: St Francis Aspire
- Vacancies: 50
- Activity Start: 10:00AM
- Activity End: 12:00PM

**\$95**

**Tuesday**  
30/09/2025

### Bowling & Laser Tag Excursion



Join us for an action-packed day at Timezone, where each child will enjoy a thrilling game of bowling or an exciting round of laser tag!

- Location: Timezone Illawarra
- Vacancies: 40
- Leaving Centre: 9:30AM
- Return to Centre: 1:30PM

**\$105**

**Wednesday**  
01/10/2025

### Carnival Day Centre Day



Step right up for a fun-filled Carnival Day, bursting with games, laughter, and classic carnival excitement for everyone to enjoy!

- Location: St Francis Aspire
- Vacancies: 50
- Activity Start: 9:30AM
- Activity End: 3:30PM

**\$85**

**Thursday**  
02/10/2025

### Cringila Park Excursion



Enjoy the great outdoors with games, fresh air, and a delicious picnic lunch featuring takeaway chips for a fun and relaxing day out!

- Location: Cringila Hills Park
- Vacancies: 50
- Leaving Centre: 10:30AM
- Return to Centre: 2:30PM

**\$105**

**Friday**  
03/10/2025

### Absolute Tom Foolery Internal Excursion



A fast-paced, laugh-out-loud show packed with magic, circus tricks, juggling, unicycling, illusions, and balloon sculpting, it's a wildly fun experience!

- Location: St Francis Aspire
- Vacancies: 50
- Activity start: 10:00AM
- Activity end: 11:30AM

**\$95**



# VACATION CARE PROGRAM

## ST FRANCIS OF ASSISI

**SERVICE MANAGER:** Tabitha  
**PHONE:** 0473 172 964  
**EMAIL:** st.francis@aspire-oshc.com.au

**Monday**  
06/10/2025

### Public Holiday



**Tuesday**  
07/10/2025

### Go Kids Play Excursion



Join us for an exciting excursion to Go Kids Play, where children can explore, climb, jump, and have fun in a safe and active play environment!

- Location: GoKidsPlay Albion Park Rail
- Vacancies: 40
- Leaving Centre: 9:30AM
- Return to Centre: 12:30PM

**\$105**

**Wednesday**  
08/10/2025

### Pottery & Paint Centre Day



Unleash your creativity, get hands-on with painting, decorating plant pots, and making colourful creations to take home and treasure!

- Location: St Francis Aspire
- Vacancies: 50
- Activity Start: 9:30AM
- Activity End: 3:30PM

**\$85**

**Thursday**  
09/10/2025

### Mini Golf Excursion



Join us for a fantastic day of Putt Putt, where we'll test our skills, tackle creative courses, and enjoy plenty of laughs and friendly competition along the way!

- Location: Illawarra Golf Complex
- Vacancies: 50
- Leaving Centre: 9:30 & 11AM
- Return to Centre: 11 & 12:30PM

**\$105**

**Friday**  
10/10/2025

### Marine Biology Internal Excursion



Connect with the Natural World as The Wildlife Movement brings the ocean to life with real rockpool creatures, inspiring kids to explore marine biology!

- Location: St Francis Aspire
- Vacancies: 50
- Activity start: 10:00AM
- Activity end: 11:30AM

**\$95**



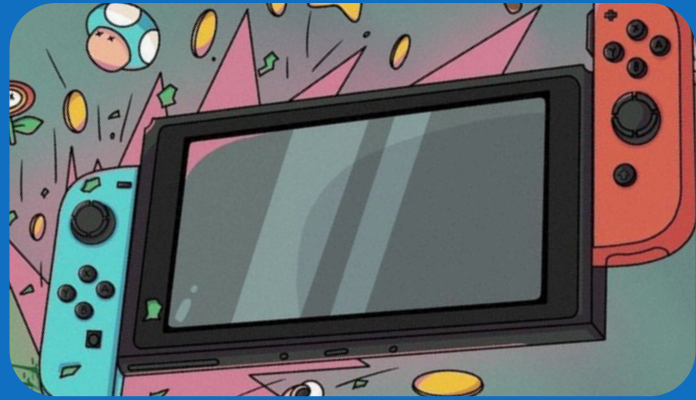
# VACATION CARE PROGRAM

## ST FRANCIS OF ASSISI

**SERVICE MANAGER:** Tabitha  
**PHONE:** 0473 172 964  
**EMAIL:** st.francis@aspire-oshc.com.au

**Monday**  
13/10/2025

**Gaming + Yard Games**  
Internal Excursion



Level up your day with epic gaming and VR adventures, then head outside for fun and friendly competition with a variety of exciting yard games!

- Location: St Francis Aspire
- Vacancies: 50
- Activity Start: 1:30PM
- Activity End: 3:30PM

**\$95**

**Tuesday**  
14/10/2025

**Back to School**

**BACK TO**  
**school**

Before & After School Care

**Wednesday**  
15/10/2025

**Back to School**

**BACK TO**  
**school**

Before & After School Care

**Thursday**  
16/10/2025

**Back to School**

**BACK TO**  
**school**

Before & After School Care

**Friday**  
17/10/2025

**Back to School**

**BACK TO**  
**school**

Before & After School Care





# IMPORTANT DAILY INFORMATION

## WHAT TO BRING EACH DAY



Hat



Morning Tea & Lunch



Water Bottle



Backpack



Enclosed Shoes



Sun Safe Clothing

## WHAT WE PROVIDE EACH DAY



Breakfast



Afternoon Tea



Late Snack

## DAILY STAFFING RATIOS

All ratios adhere to National Laws & Regulations. Daily ratios will be based off the activity and can range anywhere from 1:5 - 1:15.



# VACATION CARE IMPORTANT FAMILY INFORMATION

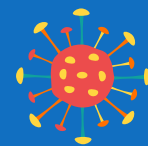


Join our fun filled ASPIRE OSHC Vacation Care program. To make a booking for Vacation Care please 'make a booking' through the [OWNA parent portal](#).



## NO HAT NO PLAY

As a sun safe measure ASPIRE OSHC requires all children and staff to wear a Cancer Council approved hat during high UV periods. In addition, and as required by the Cancer Council and WHS legislation we monitor the UV Index daily to ensure we take all reasonable precautions to protect children and staff from over exposure to the sun.



## ALLERGY AWARENESS

On enrolment, you are required to advise staff if your child has an allergy and identify the allergy on the enrolment form. To ensure we are able to take best care of your child we ask that you also provide information as to the triggers and symptoms of your child's allergy. All efforts will be made by staff to avoid such triggers. All ASPIRE OSHC services are "Nut Free" environments. Children are not allowed to bring nuts of any type into our services. The sharing of food is also not allowed.



## ARRIVALS AND DEPARTURES

You are required to sign your children in and out of the service each day recording arrival and departure time. For safety purposes, it is important that staff are informed of your child's arrival and departure daily.



## APPROPRIATE CLOTHING

As a sun safe measure ASPIRE OSHC requires all children and staff to wear a Cancer Council approved hat during high UV periods. In addition, and as required by the Cancer Council and WHS legislation we monitor the UV Index daily to ensure we take all reasonable precautions to protect children and staff from over exposure to the sun.



## ANAPHYLAXIS

If your child has a diagnosed allergy, before your child can attend the service you must provide a completed coloured allergy action plan including a coloured photo and labelled medication. All medication should be handed directly to staff on arrival. All medications must be on the premises at all times when your child is present. The action plans are to be updated as required (at least yearly) and staff notified of any changes to the action plan (refer to the anaphylaxis policy and procedure).



## MEDICATION

Before we can administer a prescribed medication to your child, we require you to complete a medication authority form. All sections of the medication form need to be completed. Medication can only be administered if the medication is in its original packaging and labelled with the child's name, a current date and the name of the medication and dosage required. (refer to medication policy) Children returning from an illness will require a Doctor's clearance certificate stating they are no longer infectious and are fit to attend care.



## SUNSCREEN

Sunscreen is available at the service, we ask that you apply the sunscreen to your child upon arrival. Staff will supervise re-application during the day. If your child is sensitive or has an allergy to the sunscreen we use, please supply an appropriate sunscreen for your child.



## ASTHMA

If your child has been diagnosed with Asthma, you must provide a current Asthma action /management plan, which needs to have been completed by your treating GP. In addition we require a long term medication form (refer to the asthma policy and procedure).



## PERSONAL BELONGINGS

We recognise that some children may like to bring cherished toys and equipment from home for use during the vacation care program. ASPIRE OSHC cannot take responsibility for lost or damaged items - this includes technology! Tech use can only take place in a designated space at a designated time. These rules will be explained to the children every day before the start of the daily program.